

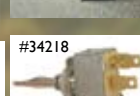
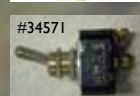
Toggle	Throw	Amp	Terminal	Up	Center	Down
54109	SPST 2 Lights: Red and White	25	4 Screw	On Red	None	Off White
55020	SPST	25	2 Screw	Off	Mom	None
5520	SPST O-Ring Seal	25	2 Screw	On	None	Off
5582	SPST	25	2 Screw	On	None	Off
551840	SPST	30A/12V 15A/36V	2 Screw	On	Off	None
558210	SPST O-Ring Seal	25	2 8" Leads	On	None	Off
5502004	SPST	25	2 8" Leads	Off	None	Mom
55088	SPDT	25	3 Screw	On	Off	Mom
551844	SPDT	30A/12V 15A/36V	3 Screw	Mom	Off	Mom
5584	SPDT	25	3 Screw	On	None	On
5586	SPDT	25	3 Screw	On	Off	On
5502107	SPDT Plasticized O-Ring Seal	25	3 8" Leads	Mom	Off	Mom
55036	SPDT	25	3 9.5" Leads	On	Off	On
5503301	SPDT	25	3 Blade	Mom	Off	Mom
59024108	SPDT Paddle Handle	25	3 Blade	Mom	Off	Mom
5588	DPST	25	4 Screw	On	None	Off
55017	DPST	25	4 Blade	On	None	Off
55046	DPDT Rev Polarity	25	4 Blade	Mom	Off	Mom
5506502	DPDT Long Handle	25	6 Blade	Mom	Off	Mom
5506503	DPDT	25	6 Blade	Mom	Off	Mom
5592	DPDT	25	6 Screw	On	Off	On
81255	Toggle Boot Seal (half)					
81264	Toggle Boot Seal (full)					
M5411101	SPST Light on Tip	25A	4 Blade	On	None	Off



Part	Desc			
41720	Backup alarm, 97dB, 12-36V			
54871PL	Circuit breaker 100A			
42159	Fuel valve, motor driven with 6 ports, gas/diesel			
42203	Fuel valve connector for #42159			
42302	Fuel valve kit that includes #42159 & #42303			
Ignition switch	Position	Term	Keys	Lockout
31114	4 + Mom start	Packard	2	No
31196	4 + Mom start	3 screw	2	No
31610	4 + Mom start	3 screw	2	Yes
52248	Junction box 10 terminal			
52249	Junction box 7 circuit breaker			



Part	Desc			
51302	Master disconnect, 2 stud, 1000A, SPST			
24360	Momentary, off/on, normally off, 60A (12V), 40A (24V)			
35306	Push-pull switch, 75A, 6-28V, 2 pos, SPST, heavy duty			
Toggle	Pos	Term	Amp	Duty
34212	On-off	2 screw	50	Heavy
34580	Mom on/Off/ Mom on	6 screw	20	Med
34571	On-off	2 screw	20	Med
34218	On-off-on	3 screw	50	Heavy
25370	Toggle seal			
Trailer connector	Poles	Amps	Notes	
11702	7	40	Male	
11721	7	40	Female	
11902	7	40	Male, weatherproof	
11410	4	20	Female	



7-Pole Trailer Power Outlet **NEW!**
 #11-896 Plug in to a 7 pole trailer plug and instantly have 110V power for your iPod, TV, tools or light.

Pollak