

# Hardware/ End Fittings



## Hardware/ End Fittings Industrial & Performance

Wide range of hardware available for most applications.  
Please contact us for further information.



### Description:

Hardware/End Fittings  
Industrial & Performance

### Applications:

- Wide range

### Features:

- See individual descriptions

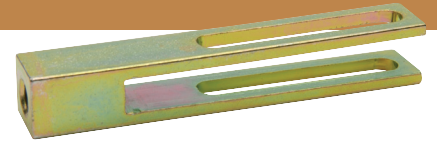
### Other Related Products:

- Linkages
- Control Cable Assemblies
- Control Heads
- Hand Control Assemblies
- Foot Control Assemblies
- Manual Transmission Shifter

# Hardware / End Fittings

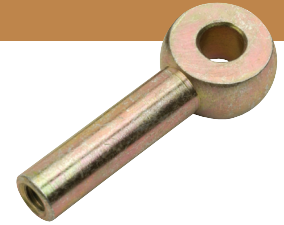
## Slip Clevis

Part Number	Thread	Pin Dia.	Length	Inside Opening	Inside Depth
AC310	1/4-28 UNF	1/4"	3.25	.28"	2.5"



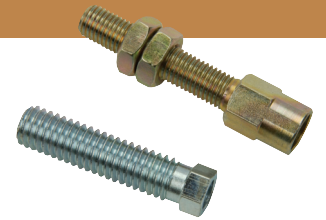
## Female Threaded Eye Ends

Part Number	Internal Threads	Pin Hole	Thickness
EE9061	5/16 - 24	1/4"	.438
EE9069	10-32	1/4"	.344
EE9151	1/4 - 28	1/4"	.344
185-051-001	5/16 - 24	9/32"	.250



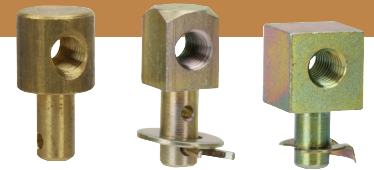
## End Rod Thread Adapters

Part Number	From (Internal)	To (External)
161-009-001	1/4-28	3/8-28
161-009-003	10-32	5/16-24
161-009-005	1/4-28	3/8-16
161-009-006	5/16-24	3/8-24
161-009-007	10-32	1/4-28



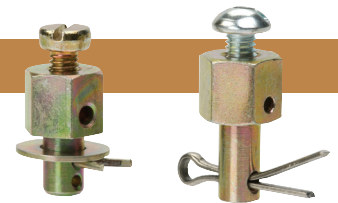
## Threaded Pivots

Part Number	Internal Threads	Pin Dia.	Material Thickness
161-091-000	10-32	1/4"	1/4"
161-093-002	1/4-28	1/4"	1/4"
161-093-003	1/4-28	1/4"	5/16"



## Wire Stop/Pivot

Part Number	Wire	Pin Dia.	Material Thickness	Set Screw
160-450-001	.075	1/4"	3/16"	10-32 UNF
160-450-002	.075	1/4"	5/16"	10-32 UNF



## Wire Stop

Part Number	Hole Size	Set Screw
156-416-001	.138"	8-31 UNC Hex Socket
156-416-002	.093"	8-32 UNC Hex Socket
160-429-001	.138"	8-32 UNC Slotted
160-429-002	.093"	8-32 UNC Slotted

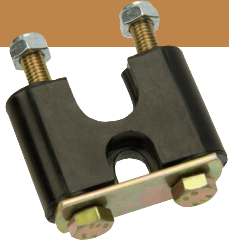


## U-Bolts (furnished with 2 hex nuts)

Part Number	From (Internal)	To (External)
161-010-001	10-32 UNF	VLD
161-010-002	1/4-28	LD
161-010-003	5/16-24	MD
161-010-004	3/8-24	HD

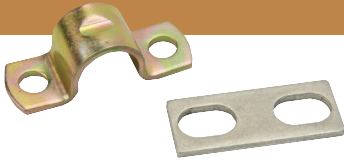


## VLD/LD Mounting (fits grooved conduit fitting)



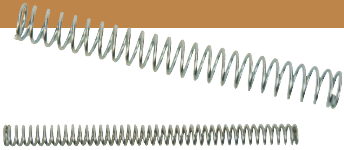
Part Number
ST3652

## Strap Clamps and Shims



Use With	Strap	Shim
VLD	161-011-001	175-435-050
LD	161-011-002	175-435-051

## Compression Springs (for brake cables)



Part Number	Inside Dia.	Outside Dia.	Length	Solid Height	Spring Rate
175-923-001	.30	.437	12.0	4.6	3.93lb/inch
175-923-002	.30	.437	6.4	3.20	5.75lb/inch
175-923-006	.30	.437	5.7	2.87	6.23lb/inch
175-923-001	.26	.437	10.0	6.62	15.97lb/inch
175-923-003	.40	.500	4.3	1.00	4.47lb/inch

## Bellows (trim to length)



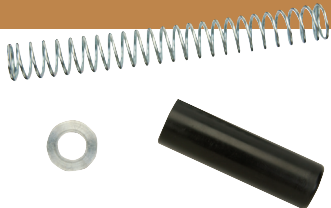
### Adapter Ring

Part Number	For Use With Cable Size
175-435-072	VLD
175-435-081	LD
175-435-082	MD

Part Number	For Use With Cable Size	Compressed Length	Extended Length	Max Travel
175-522-001	VLD	3.0"	8.0	6.0
175-524-001	LD	3.4"	9.7	6.0
175-525-001	MD	4.5"	11.3	6.0

Maximum recommended travel is shown.  
Must be trimmed shorter for use on shorter travel cables.  
See cutting matrix #CC-111. Adapter rings to mount bellows to conduit fittings.

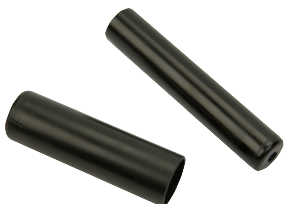
## Spring Return Kit



Convert any LD size, 2" travel threaded swivel end to spring loaded to extended position  
Force with end rod extended - 4.6lbs  
Force with end rod retracted - 15.2lbs

<b>Part Numbers:</b>	Spring	175-930-001
	Collar	175-435-118
	Outer Guide	160-071-025

## Umbrella Seal



Part Number	For Use With Cable Size
160-071-005	VLD, 2"
160-071-006	VLD, 3"
160-071-007	VLD, 4"
160-071-008	LD, 2"
160-071-009	LD, 3"
160-071-010	LD, 4"
160-071-011	MD, 2"
160-071-012	MD, 3"
160-071-013	MD, 4"

Part Number	Type	Thread Size
165-183-001	PTO	1/4-28
165-183-002	PTO	1/4-20
165-183-003	PTO	5/16-18
165-183-004	PTO	5/16-24
165-103-001	2" Mushroom	1/4-28
165-103-002	2" Mushroom	1/4-20
165-103-004	2" Mushroom	3/8-24
165-103-006	2" Mushroom	5/16-18
165-038-124	2" Mushroom	1/2-13
165-038-106	1-3/8 " dia. x 4-3/8 " tall	1/2-13
165-172-201	3-1/2 " Aluminum T	1/4-20
165-172-202	3-1/2 " Aluminum T	1/4-28
165-172-203	3-1/2 " Aluminum T	5/16-28
165-172-206	3-1/2 " Alum./Black T	1/4-20
300-057-008	3-1/2 " Alum. Twist Lock T	N/A



### Hydroback

Part Number	Travel	Spring Force at Center	For Use With Cable Size
165-073-210	2 "	10lb	LD
165-073-220	2 "	20lb	LD
165-073-310	3 "	10lb	LD
165-073-320	3 "	20lb	LD
165-072-210	2 "	10lb	MD
165-072-220	2 "	20lb	MD
165-072-310	3 "	10lb	MD
165-072-320	3 "	20lb	MD



### Spool Valve Adapters - Open Style Mount

Part Number	For Use On
185-101-001	Comm. Shearing 505
185-101-002	Comm. Shearing D50
185-101-003	Comm. Shearing A35
185-101-004	Comm. Shearing A20
185-101-005	Comm. Shearing VA20
185-101-006	Husco 6000
185-101-007	Husco 7120
185-101-008	Gresen V20, Husco 5000 V10, V31P, V42, CP, CT, CPT, CS, 25P, 25PK



### Modulator Assemblies and Replacement Cables

Cable Output End	MODULATOR UNIT		Cable Only
	Pull To Operate	Push To Operate	
<b>A. Grooved Mount</b>			
173 Utility	CA 343-3-001-L	CA 343-3-002-L	CA 343-3-L
174 Utility	CA 343-4-001-L	CA 343-4-002-L	CA 343-4-L
<b>B. Threaded Mount</b>			
173 Utility	CA 341-3-001-L	CA 341-3-002-L	CA 341-3-L
174 Utility	CA 341-4-001-L	CA 341-4-002-L	CA 341-4-L
REPLACEMENT CABLES ONLY FOR OTHER USA MANUFACTURED MODULATORS			
Cable Output End	173 Utility	174 Utility	
Grooved Mount	CA 213 G-L	CA 214 G-L	
Threaded Mount	CA 213 T-L	CA 214 T-L	



All dimensions are represented in inches

#### WARNING!

Since the manufacturer is unable to determine all applications in which a part may be placed, it is the user's responsibility to determine the suitability of the part for its intended use. This is especially true where safety is a factor. Incorrect application or installation may result in property damage, bodily injury, or death. For technical assistance, call 260-749-5105.

**Cablecraft**  
Cablecraft Motion Controls



Instrumentsales.com  
Call (800) 333-7976

Linking Motion  
& Control...  
The Cablecraft  
Solution

